

At a school like ours it's impossible to know **everyone.**

The front row is always **packed** at games. Kids spill out of the stands and into the stairs.

And even with all those people, you could still feel **isolated,**

but WE don't.

009 semester one



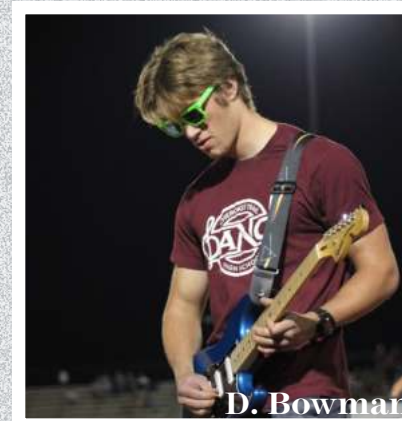
J. Konda

077 semester two



P. Chamlagain
C. Pryor

115 reference



D. Bowman

CONNECT