

# 2020 US PRESIDENTIAL ELECTION

How has politics affected you or someone you know? How has that influenced your political views?

## TOP 5 ISSUES IN THE U.S.

Students responded to a survey and declared what they thought were the most important issues in the U.S. today.



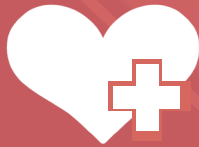
ECONOMY



THE ENVIRONMENT



REPRODUCTIVE RIGHTS



HEALTH CARE



FREE SPEECH



Trump's views have been personally offensive to people of all minorities in this country. He attacks people of the LGBTQ community, women, and those of color. He has crossed the line in my life by disrespecting soldiers of this country, especially those who've died. "They're losers," he says. Well I can tell you one thing is for sure, my brother did not die heroically for this country, so that he would be disrespected by someone who has never set foot onto an active war zone. He's a disgrace to this democracy and to our country.



Being a T... people support T... Jesuit... than th... amazing... some pe... will haras... but this... when I g... not. Peop... we made... "there be



It affects all of us. The people we put into office make decisions to run our country. It can be clearly seen with COVID-19 and the restrictions put into place.



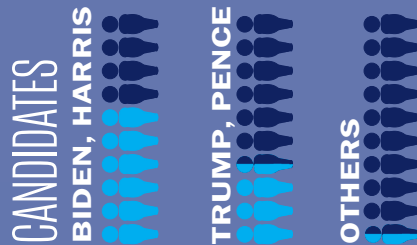
President Tru... empathy for the p... they are white men... the people who ha... has not shown resp... that



Politics have affected me because I am a minority and a person of color. We love the world more than the world loves us and we saw that this summer. This has influenced my political views because I want to support the person that supports us.

# IF STUDENTS COULD VOTE

423 students responded to our anonymous survey and declared which candidate they support and how satisfied they are with President Trump.



## HOW SATISFIED ARE YOU WITH PRESIDENT TRUMP



g a Trump supporter at Regis is very difficult. I've heard people saying they will harm or unfriend people if they support Trump which is absolutely not okay. **People at Regis don't pick people based off of political beliefs rather than the values and morals they hold.** Regis Jesuit is an amazing school but, the people are very politically biased and the people fear speaking their mind due to the fact people harass you, bully you and threaten you. I love Regis Jesuit, but this is never okay! We were born with free speech and when I go to school I expect that to be respected, which it is not. People need to do better. Just yesterday, in a group chat we made plans with a few people to hang out, someone said we better not be any trump supporters going." **Do better.**

“Half my family supports Trump and the other half is extremely anti-trump and it's led to a lot of arguments at thanksgiving. It's influenced me by how passionate people are about politics.

Trump has not shown any respect for the diverse country that America is.

“I think that it can say a lot about somebody. I'm not going to unfriend someone based solely on their political opinions, **but when it interferes with basic human decency and rights I will.** I also feel like it's our responsibility to be informed and make responsible decisions.

“Everyone has their own political views. But when it comes down to this election, many people's lives are at risk. Minorities are in constant fear of losing their rights and all the years of oppression they have fought against. **Politics' effect on who is in charge of everyone is major. I have already lost multiple loved ones and family members during this pandemic solely stemmed from the fact "my" president approached this very poorly. In addition, I've already lost countless family members due to deportation. Of course that influences my political views. I would never want anyone to experience the same pain I had endured. Seeing that the president is keeping children in cages at the border and cutting immigration numbers down truly saddens me.**

423 students responded to our anonymous survey and give their opinion on how politics has affected them or someone else and how it has influenced their political view.